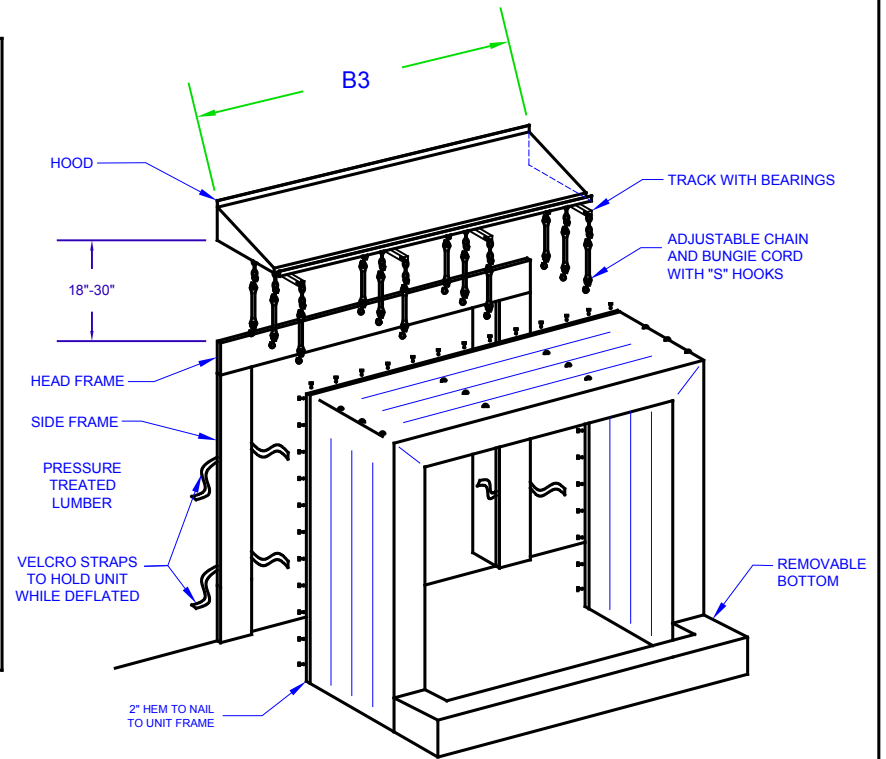
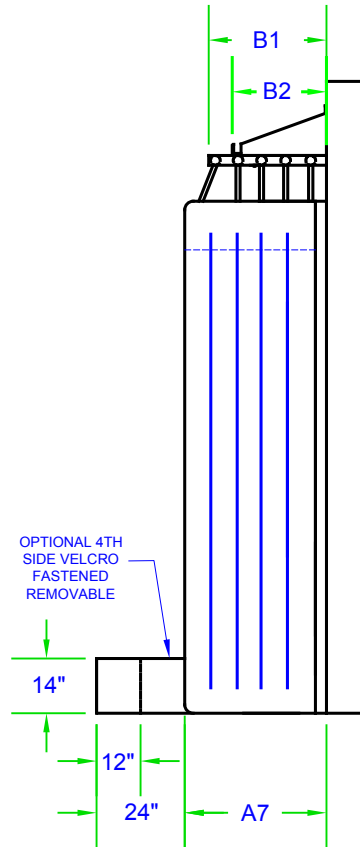
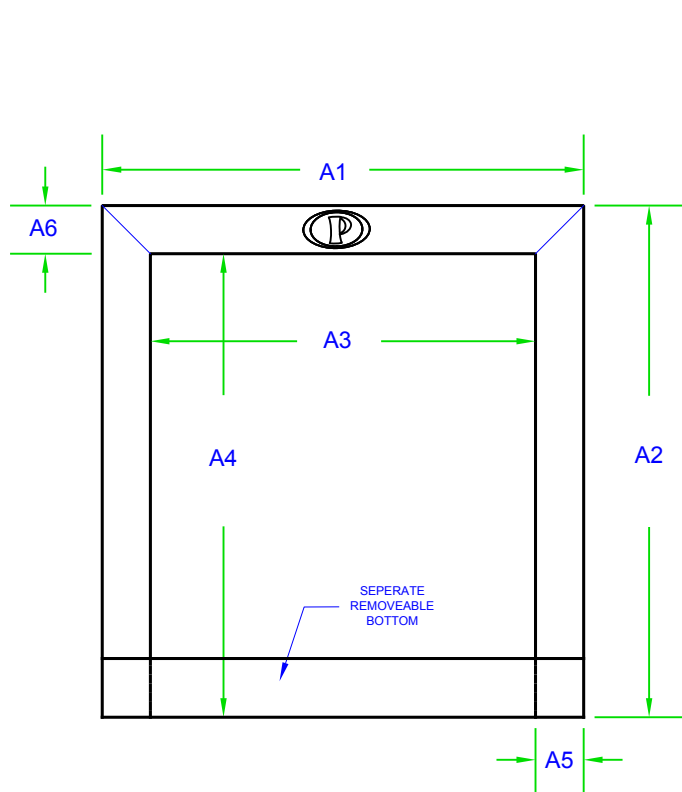
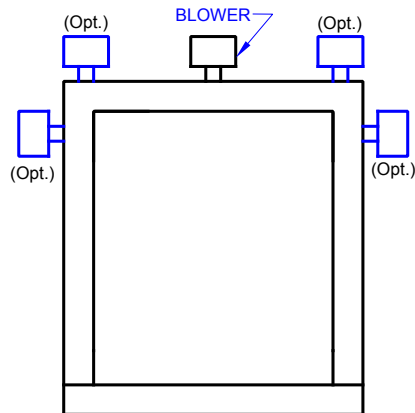


# PERMA INFLATABLE MRI SHELTER SPECIFICATION SHEET / HOOD WITH TRACK & TROLLEY



## BLOWER PLACEMENT OPTIONS



## SPECIAL INFORMATION

### DIMENSIONS:

- A1 - \_\_\_\_\_" UNIT WIDTH
- A2 - \_\_\_\_\_" UNIT HEIGHT
- A3 - \_\_\_\_\_" OPENING WIDTH
- A4 - \_\_\_\_\_" OPENING HEIGHT
- A5 - \_\_\_\_\_" BACKBOARD WIDTH SIDE
- A6 - \_\_\_\_\_" BACKBOARD WIDTH HEADER
- A7 - \_\_\_\_\_" PROJECTION
- B1 - \_\_\_\_\_" TRACK PROJECTION
- B2 - \_\_\_\_\_" HOOD PROJECTION
- B3 - \_\_\_\_\_" HOOD WIDTH

### GENERAL INFO:

QUANTITY: \_\_\_\_\_, MODEL: PERMA MRI-18-V-4-H  
 DOOR SIZE: \_\_\_\_\_ WIDTH, \_\_\_\_\_ HEIGHT  
 FABRIC: 18 oz FR, COLOR: BLACK  
 DOCK HEIGHT: \_\_\_\_\_



## PERMA TECH, INC.

363 HAMBURG STREET • BUFFALO, NY 14204  
 (716) 854-0707 • 1-800-DOC-SEAL  
[www.permatechinc.com](http://www.permatechinc.com)

JOB:	
DEALER:	
CONTACT:	ORDER #:
APPROVED BY SIGNATURE:	DRAWN BY: J.ZERNICKEL
	DATE: 2/6/2020